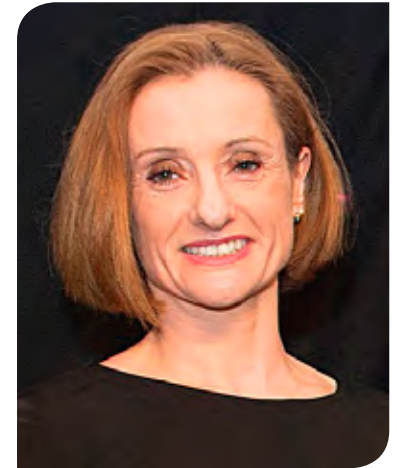


Women in rail

Adeline Ginn



Women in Rail Wales

Extending the Women in Rail support network to Wales with the launch of Women in Rail Wales – Ymestyn y rhwydwaith i gefnogi Women in Rail i Gymru gyda lansiad

On 26 June, the Women in Rail network will be expanding further as the charity launches its eighth regional group, Women in Rail Wales, in yet another milestone for the organisation.

Women in Rail Wales is made out of a committed group of men and women from across the railway industry in Wales who have joined forces to offer a support platform for Women in Rail members and further the charity's agenda of improving gender balance, diversity and inclusion in this region.

Jo Seabright, Marketing Consultant and rail franchise bid specialist, who recently led the launch campaigns for the new Transport for Wales Rail Services, leads the new group. Adeline Ginn, Founder and Chair of Women

A variety of events will be organised by Women in Rail Wales which will include networking opportunities, development workshops and of course some relaxing and fun get-togethers. The group has ambitious growth plans, as it will showcase the benefits of gender balance, diversity and inclusion to like-minded groups and businesses and seek to attract more women into the rail workforce in Wales

in Rail observed: 'We had received several requests in the past few months to set-up a group in Wales. Now, thanks to Jo and her team, Women in Rail is able to reach out to its members in this part of the country and provide them with opportunities for networking and easy access to a solid development platform, both of which are vital to ensuring we harness and retain female talent within our industry.'

Across the UK rail industry, it is important to appreciate the crucial role we each have to play to ensure that our sector continues to thrive and attracts the widest pool of talent. The Women in Rail regional networks provide Women in Rail members across the UK with an opportunity to expand their professional and personal network locally and, through development workshops and access to a unique cross-industry mentoring programme, receive the support they need in their professional development and growth, thus contributing to attracting, developing and retaining female talent in UK rail.

Talking about the launch, Jo Seabright commented: 'Transformational plans for the

railway in Wales are well underway, resulting in huge investments and hundreds of new roles being created over the next few years. With so many varied career opportunities, it is the ideal time to inspire women from all backgrounds to join the rail sector in Wales.'

A variety of events will be organised by Women in Rail Wales which will include networking opportunities, development workshops and of course some relaxing and fun get-togethers. The group has ambitious growth plans, as it will showcase the benefits of gender balance, diversity and inclusion to like-minded groups and businesses and seek to attract more women into the rail workforce in Wales.

The launch of Women in Rail Wales will be sponsored by Transport for Wales Rail Services. We look forward to welcoming you at Women in Rail Wales! Ni'n edrych ymlaen i'ch croesawu chi yn Women in Rail Wales!

To find out more about Women in Rail Wales or to register your interest in becoming a member email Wales@womeninrail.org. For more information about Women in Rail visit <http://womeninrail.org/>

