

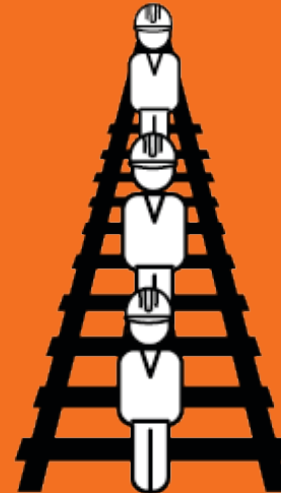
# Jumpstart Your Career with Our Operative to Technician Programme! (S&T)

Are you ready to level up in the rail industry? Our Operative to Technician Programme in Signalling & Telecoms (S&T) offers a unique pathway for ambitious individuals to advance their skills and careers. Join us and gain hands-on training, expert mentorship, and the chance to support some of the UK's busiest and most crucial railways.

This 18–24 month programme is a brilliant opportunity to take your career to the next level. Work and learn from experts, develop an array of technical skills, and gain hands-on experience with manual, electrical, and digital equipment across maintenance, design, installation, testing, and fault finding.

What's in it for You?

- **Career Progression:** Start as an Operative (Trainee), train with the best, and become a qualified Technician upon successful completion.
- **Comprehensive Training:** You'll learn all things S&T, from signals to points systems, in a structured programme that allows you to continue in your Operative role while you train.
- **Industry Certification:** We'll support you in obtaining the Institution of Railway Signal Engineers Licence (IRSE)—a must-have credential for safety-critical work on railways.



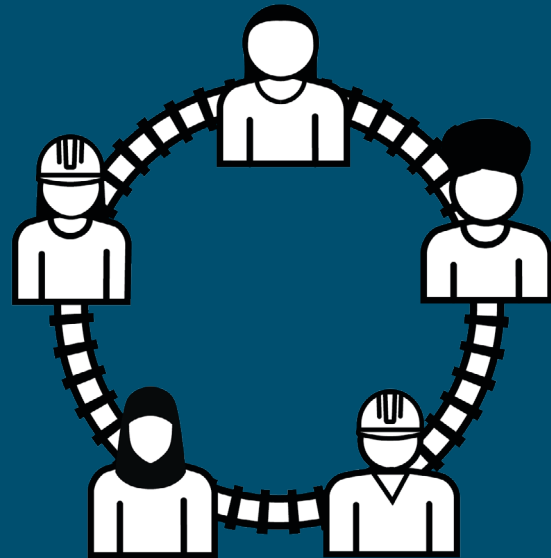
# About Our Route & Region

The West Coast South route, spanning from Crewe to London Euston, is one of the UK's most critical railways.

This route carries millions of passengers annually and handles up to 10% of the nation's freight, providing a vital link for people and goods. As the busiest mixed-use railway in Europe, the West Coast main line connects London to Scotland, serving not only long-distance travellers but also thousands of daily commuters across Hertfordshire, Northamptonshire, and Buckinghamshire.

In the North West & Central region, our network extends from London to the Scottish border, moving an impressive 1.3 million passengers every weekday and transporting 700,000 tonnes of freight weekly through a network of 571 stations. This vast region, which includes major cities like Birmingham, Manchester, Liverpool, Edinburgh, and Glasgow, represents a quarter of Britain's railway system, underscoring our role in connecting communities and supporting economic growth across the UK.

Together, our route and region embody the backbone of Britain's rail infrastructure, dedicated to keeping people connected, goods moving, and services reliable—today and for the future.



# Why Apply?

Become an S&T Technician managing signals and safety systems in a hands-on, team-oriented role.

## What You'll Bring

Teamwork & Communication: Key for safety.  
Proactive Planning: Anticipate needs.  
Adaptability: Work outdoors in all weather.  
Safety Awareness: Uphold high standards.

## Programme Highlights

**Duration:** 18–24 months

**Role:** Train while working as an Operative

**Promotion:** Move to Technician upon completion

**Travel:** Some initial travel required.

## Requirements

- Electrical/signalling/engineering experience
- Valid UK driving license (Category B)
- Shift flexibility and outdoor readiness

Join our intensive training programme and start your journey to becoming a Technician!

Application link coming soon

