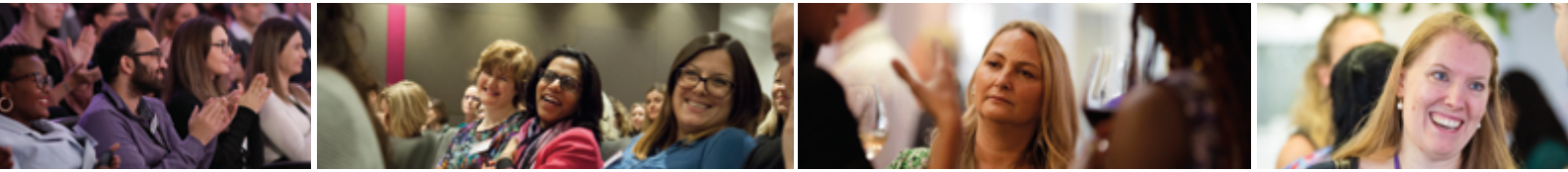
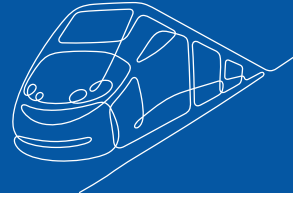




YOU ARE *invited* TO A MOVING AHEAD SHOWCASE FOR THE

# WOMEN IN RAIL MENTORING PROGRAMME



Please join us to explore ways to empower and educate leaders, create an inclusive environment as well as progress diverse talent across the railway industry.

Hear from Sandeep Johal about the power of mentoring and how the Women in Rail programme can be a lever for creating impact and driving sustainable change within the rail industry.

30th January 2024

12-1pm - Zoom

12.00: Opening and introduction to Moving Ahead

12.10: An introduction to Women in Rail mentoring

12.30: Sandeep Johal 'The power of mentoring'

12.50: Q&A

13.00: Close

We'll be joined by...



**Shaun Epps**  
Client Partnership  
Manager



**Leigh Brewer**  
Client and  
Programme Partner



**Sandeep Johal**  
Behavioural change  
psychologist, therapist  
and consultant

Please register below to secure your place.

[JOIN THE SHOWCASE ▶](#)